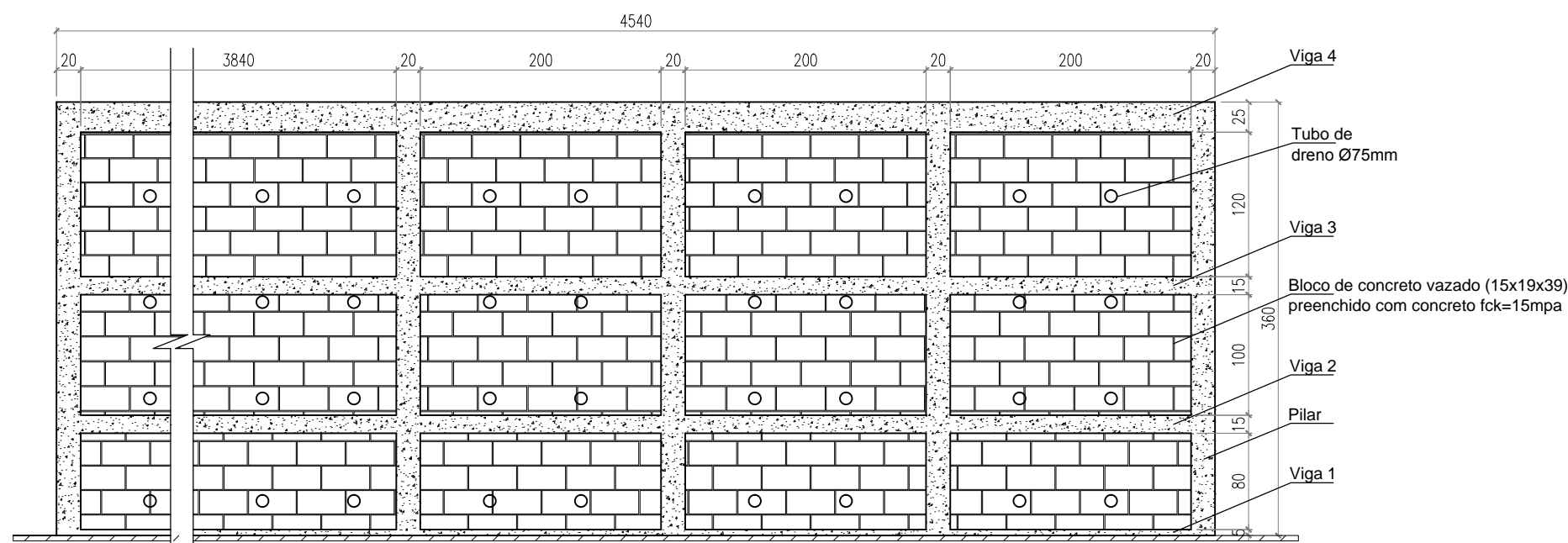
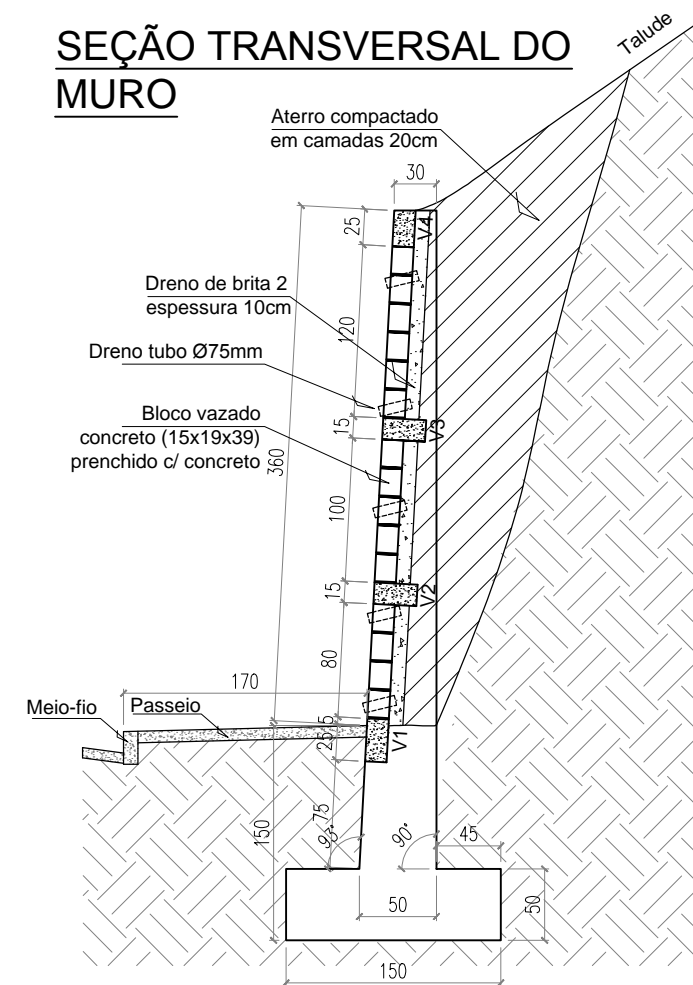


VISTA FRONTAL DO MURO

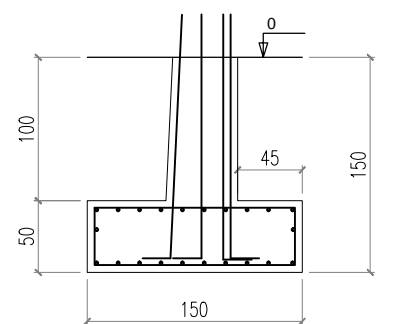


OBS.: Prever junta de dilatação de 2 cm na metade do comprimento total do muro.

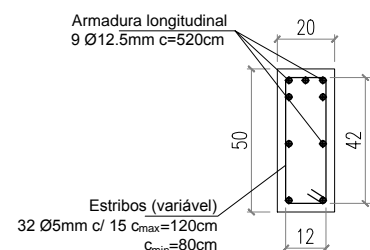
SEÇÃO TRANSVERSAL DO MURO



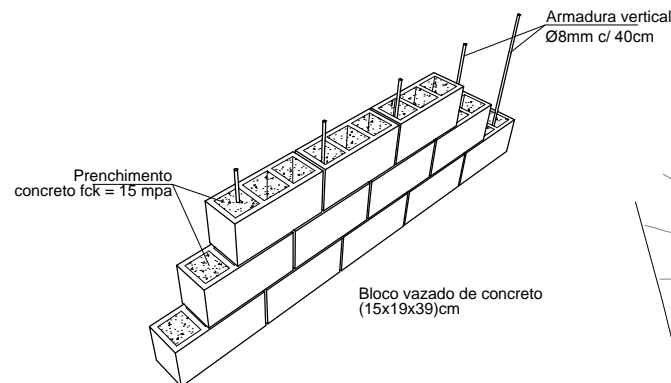
SAPATAS DE FUNDAÇÃO (22X)



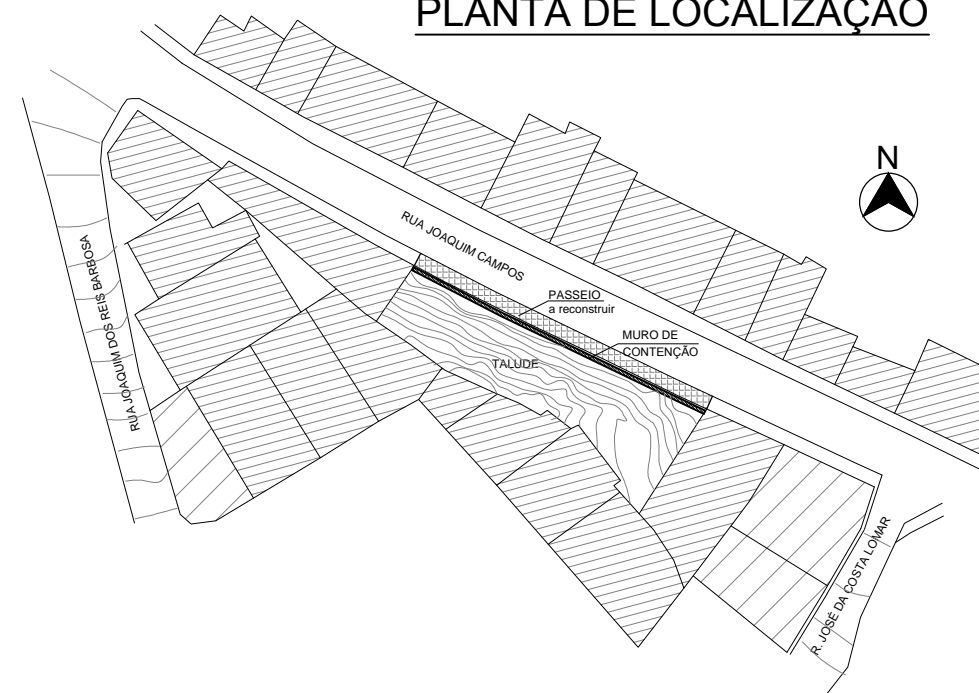
PILARES (22X)



ALVENARIA (bloco concreto c/ armadura)

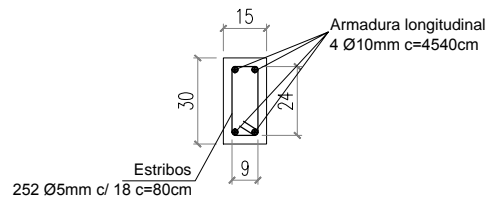


PLANTA DE LOCALIZAÇÃO

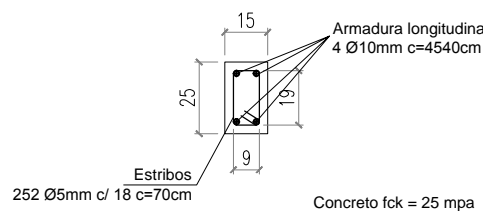


VIGAS

Armadura de Vigas 1, 2 e 3



Armadura de Viga 4



PROJETO DE MURO DE CONTENÇÃO

LEGENDAS:

CONVENIOS:
RECURSO PRÓPRIO

LOCAL DA OBRA:
RUA JOAQUIM CAMPOS, CENTRO, ENTRE FOLHAS/MG
COORDENADAS: 19°37'43.10"S, 42°13'34.81"O

PREFEITURA MUNICIPAL DE ENTRE FOLHAS/MG

APROV.	REQ.	DATA:
CONF.: RT	AILTON SILVEIRA DIAS - PREFEITO MUNICIPAL	AGOSTO/2023
RT N.º: MG20232341992	VALMIR VIEIRA MENDES - ENG.º CIVIL - CREA 208929/D	ESCALA: INDICADAS
		FOLHA N.º: 01/01